

Coal Fields Regional Industrial Park (AEPKY)

Trus Joist Lane | Chavies, KY | Perry County

Available Acres: 388 | Lease Rate: Negotiable | Sale Price: \$10,000 - \$20,000 per acre



Property and Area Description

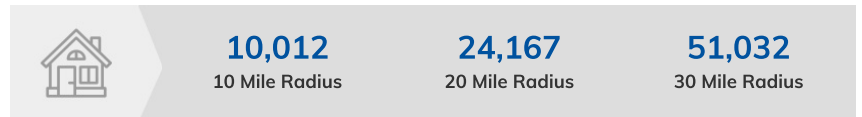
This AEP Quality Site was reviewed for development by engineering experts at Burgess and Niple, and a detailed site review and completed Phase I environmental report are available upon request. Large Industrial Site with excess electricity, natural gas, water, and sewer. Utilities are located along road; ready for expansion. Site has 21 conceptual lots ranging from 5.38 to 15.86 acres. Property has level topography. Zoned Industrial. Phase I Environmental Study is complete.

Population



Source: ESRI®, 2017

Households



Source: ESRI®, 2017

Zoning:	Industrial
Topography:	Level
Setting:	Industrial Park
Within City Limits:	Unknown
Lease Rate:	Negotiable
Last Updated:	Jul 24, 2018

Economic Development Contact

Robert S. Shurtleff

AEP - Kentucky Power Company

3249 North Mayo Trail

Pikeville, KY 41501

(606) 437-3180 | rsshurtleff@aep.com

Transportation

Nearest 4-Lane Hwy: SR 15 (0.10 mi.)

Nearest Interstate: I-75 (67.00 mi.)

Nearest Airport: Wendell H. Ford Regional Airport (2.00 mi.)

Nearest Commercial Airport: Huntington Tri-State Airport (116.00 mi.)

Rail Served: Other

Rail Infrastructure in Place: No

Utilities

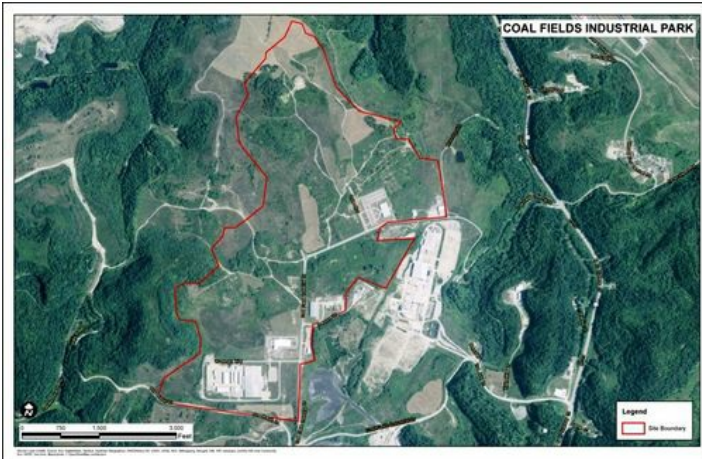
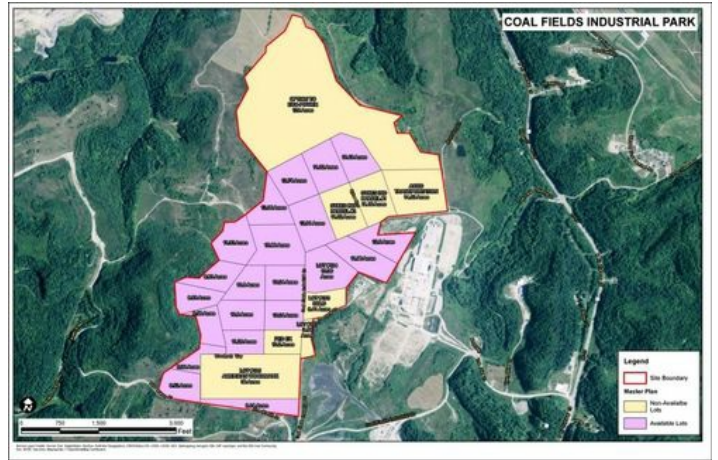
Electric: AEP - Kentucky Power Company

Natural Gas: City of Hazard

Water: City of Hazard

Sewer: City of Hazard

Property Images



Economic and Business Development | American Electric Power
1 Riverside Plaza | Columbus, OH 43215 | (800) 360-7483 | aeped@aep.com