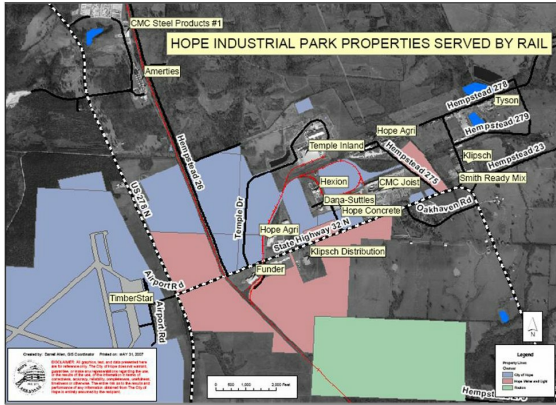


Hope Highway 32 Industrial Site

Arkansas State Highway 32 | Hope, AR | Hempstead County
 Available Acres: 378 | Lease Rate: Negotiable | Sale Price: \$5,000 to \$9,500
 - Negotiable



Property and Area Description

This AEP Quality Site was reviewed for development by engineering experts at Burgess and Niple, and a detailed site review and completed Phase I environmental report are available upon request. The Hope Highway 32 Industrial Site is located just north of Hope, Hempstead County, Arkansas, with close and easy access to US 30. With 378 total available acres in lots ranging from 11 to 162 acres, the already industrial area is ready for development. Currently utilized for agricultural or vacant land, the lots available need minimal grading and clearing prior to development. Infrastructure and utilities are easily accessible, on site, and/or available for expansion.

Population



Source: ESRI®, 2018

Households



Source: ESRI®, 2018

Zoning:	Industrial
Topography:	Generally Flat
Setting:	Industrial Park
Within City Limits:	No
Specialty Features:	None
Certified:	No
Lease Rate:	Negotiable
Last Updated:	Jan 11, 2018

Economic Development Contact

Eric S. Basinger, CEcD
 AEP - Southwestern Electric Power Company
 (318) 673-3170 | esbasinger@aep.com

Transportation

Nearest 4-Lane Hwy: US 278 (1.00 mi.)
 Nearest Interstate: I-30 (4.5 mi.)
 Nearest Airport: Hope Municipal Airport (0 mi.)
 Nearest Commercial Airport: Texarkana Regional Airport - Webb Field (28.00 mi.)
 Rail Served: No
 Rail Accessible: Unknown
 Rail Infrastructure in Place: Yes

Utilities

Electric: AEP - SWEPco / Hope Water and Light (Wholesale Provider)
 Natural Gas: CenterPoint Energy
 Water: Hope Water and Light
 Sewer: Hope Water and Light
 Telecommunications: AT&T and SWAT