



## San Angelo Regional Airport (AEPTX)

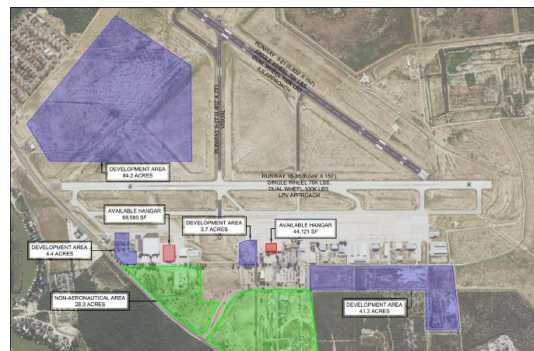
Available Acres: 161

### Address:

8618 Terminal Circle  
San Angelo, TX 76904 (Tom Green)

### Property and Area Description:

This AEP Quality Site was reviewed for development by engineering experts at Burgess and Niple, and a detailed site review is available upon request. This 161-acre site is subdivided into five available areas (lot sizes are 3.7 acres, 4.4 acres, 28.3 acres, 41.3 acres, and 84.2 acres) with two available hangars - 68,903 SF and 44,121 SF. The property is located in San Angelo, Tom Green County, Texas. Site is ready for build-to-suit buildings. Airport serves commercial, private, and military operations. All utilities are in place. The sites are level and located in close proximity to four-lane US 277.



### Site Details:

Available Acres: 161	Adjacent Avail. Acres: 0
Topography: Generally Flat	Setting: Other
Zoning: Planned Business Pk	Within City Limits: No

### Contact:

E. Ray Covey  
AEP Texas  
400 West 15th Street, Suite 1500  
Austin, TX 78701  
Phone: 512-391-2981  
Fax: 866-947-1062  
E-Mail: [ercovey@aep.com](mailto:ercovey@aep.com)  
Web site: <http://www.aeped.com>

Roland Peña, Economic Development Director  
City of San Angelo  
Phone: 325-653-7197  
E-Mail: [roland.pena@cosatx.us](mailto:roland.pena@cosatx.us)  
Web site: <http://www.cosatx.us>

### Transportation:

Nearest Interstate: I-10	Distance (miles): 63
Nearest 4-Lane Highway: US 76	Distance (miles): 4
Nearest Commercial Airport: San Angelo Regional Airport	Distance (miles): 0.1
Rail Served: No	

### Utilities:

Electric Distribution: AEP Texas  
Natural Gas Distribution: Atmos Energy  
Water: City of San Angelo  
Sewer: City of San Angelo Water Utilities  
Local Telecommunications Service: Frontier Communications

### Offering:

Sale Price: Not for Sale  
Lease Rate (Sq. Ft./Per Year): For Lease-Variou  
Rates