



Avilla Industrial Park (AEPIN)

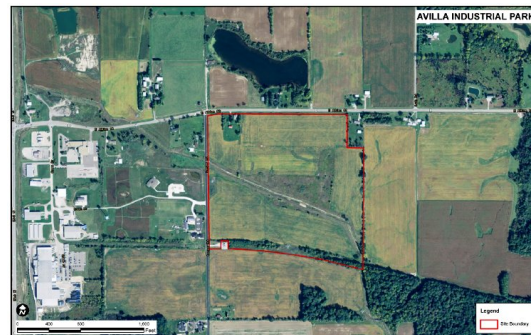
Available Acres: 65

Address:

1300 East Albion Street
Avilla, IN 46710 (Noble)

Property and Area Description:

This AEP Quality Site was reviewed for development by engineering experts at Burgess and Niple, and a detailed site review is available upon request. This new 78-acre Avilla Industrial Park located in Avilla, Noble County, Indiana, and is owned by the Town of Avilla. The site is located at SR 8 and SR 3 and is zoned Industrial. Some environmental studies have been completed.



Site Details:

Available Acres: 65	Adjacent Avail. Acres: 0
Topography: Gently Rolling	Setting: Industrial Park
Zoning: Industrial-Light	Within City Limits: No

Transportation:

Nearest Interstate: I-69	Distance (miles): 10
Nearest 4-Lane Highway: SR 3	Distance (miles): 0.5
Nearest Commercial Airport: Fort Wayne International Airport	Distance (miles): 25
Rail Served: No	

Utilities:

Electric Distribution: AEP - Indiana Michigan Power
 Natural Gas Distribution: NIPSCO
 Water: Town of Avilla
 Sewer: Town of Avilla
 Local Telecommunications Service: CenturyLink and LigTel Communications

Contact:

Ashley N. Savieo, CEcD
 AEP - Indiana Michigan Power
 110 East Wayne Street
 Fort Wayne, IN 46802
 Phone: 260-408-3629
 E-Mail: ansavieo@aep.com
 Web site: <http://www.IndianaMichiganED.com>

Rick Sherck, Exective Director
 Noble County Economic Development Corporation
 Phone: 260-636-3800
 E-Mail: rick@noblecountyedc.com
 Web site: <http://www.noblecountyedc.com>

Offering:

Sale Price: \$30,000 per acre
 Lease Rate (Sq. Ft./Per Year): Available for Lease